



MYTHS & MAGIC CASTLE TREAT BOX



By Sarah Wills

www.SarahsInkSpot.com

All images copyright © 1990-2018 Stampin' Up! ®

Stampin' Up! Supplies Used:

Stamps: Magical Day (CM 145857/WM 145854)

BUNDLE: Magical Day (CM 145985/WM 145984)

Cardstocks: Neutrals Best 12x12 (145411), Real Red (102482), Whisper White (100730)

Die Cutting/Embossing: Magical Mates Framelits (145660), Brick Wall EF (138288), Big Shot (143263)

DSP: Myths & Magic Specialty (145600)

Ink: Memento Tuxedo Black (132708), Real Red (126949)

Blends: Pink Pirouette Light (144593), Old Olive Light (144574), Smoky Slate Combo Pack (145058), Cherry Cobbler Light (144576), Daffodil Delight Light (144586), Bronze (144607)

Twine: Linen Thread (104199)

Tools: Simply Scored (122334), Paper Snips (103579), 1/2" Circle (119869)

Misc: Clear Tiny Treat Boxes (141699), Myths & Magic Specialty Washi Tape (145602), Glitter Enamel Dots (144200), Metallic Enamel Shapes (141678), Dimensionals (104430), Tear & Tape (138995), Snail (104332), 4" Lollipop Stick, Candies

INSTRUCTIONS:

1 – Cut a piece of 12x12 cardstock to measure 5" x 12" ...



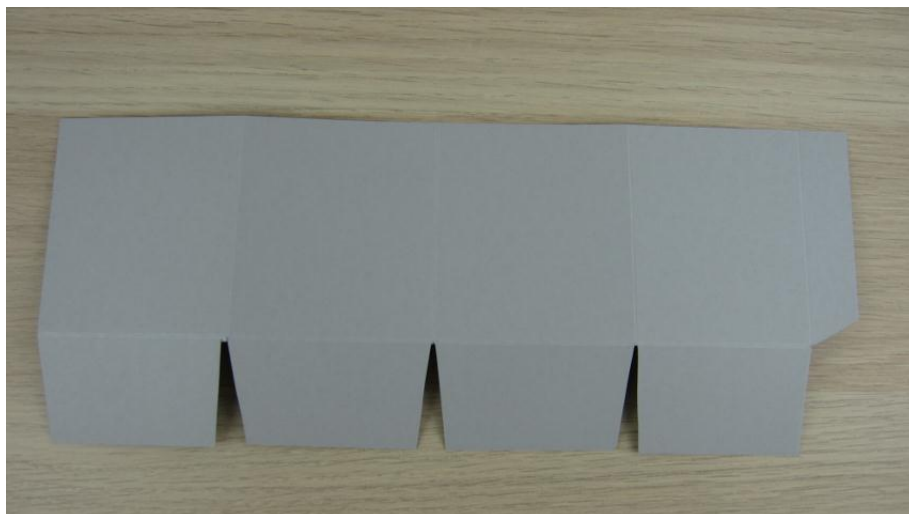
2 – Pop in your score tool with the short edge along the top and score down at 1 3/4" ...



3 – Turn the cardstock around and score at 2 7/8", 5 3/4", 8 5/8" and 11 1/2" ...



4 – Cut along those score lines up to the first 1 3/4" score line that you made to create tabs...



5 – Use the Brick Wall Embossing Folder and your Big Shot to texture half of the panels...



6 – And do the same to the other half – the embossing folder is sized perfectly for this project but before running it through your Big Shot be sure that you don't need to trim a little off of the end tab – you want the embossed pattern the whole way across those four panels...



7 – To make the turrets, use a ruler and pencil to draw your shapes...



8 – And cut them out using Paper Snips...



9 – Apply strong adhesive tape to the end tab but don't remove the backing paper yet...



10 – Apply strong tape to the bottom flaps and fold them all in on themselves to get a sturdy base...



11 – Pop in a colorful square of cardstock to cover those bottom folds – cut it to be 2 3/4" square...



12 – And there is your finished castle box ready for decorating!



13 – To create the insert, simply fill a Clear Tiny Treat Box with candies and decorate as desired – here is how I decorated mine:

I used a 4" lollipop stick for the flag pole and created the banner using a stamp and die from the Magical Day Bundle. I attached the flag pole using a piece of Washi Tape and create the ball the wizard is holding by popping a bit of that washi tape onto a piece of white cardstock and used my ½" Circle punch to cut it out...



And here is how I decorated my castle – all supplies I used are detailed in the supply list at the top of this Project Sheet:





sarah