



Tea Light Candles & Match Keeper



By Debbie Henderson

www.debbiesdesignsblog.blogspot.com

All images copyright © 1990-2019 Stampin' Up! ®

Stampin' Up! Supplies Used:

- Stamps: Picture Perfect 145519
- Inks: Blueberry Bushel 147138, Lemon Lime Twist 147145
- Cardstock: Blueberry Bushel 146968, Call Me Clover 147139, Whisper White 100730
- Designer Paper: Painted Seasons Bundle 150349
- Accessories: Granny Apple Green ½" Textured Weave Ribbon 146920
- Tools: Four Seasons Framelits Dies (150074), Sprig Punch (148012), Story Label Punch (150076), Detailed Trio Punch (146320), Stampin' Dimensionals (100430), Simply Scored (122334), Tear & Tape (138995), Paper Snips 103579
- Miscellaneous: Wooden Matches, (4) Tea Light Candles

INSTRUCTIONS:



Step 1: Box: Blueberry Bushel Cardstock 6-1/4" x 5-1/4". Score at 1" on all four sides.



Step 2: Fold on all score lines. Using Paper Snips, cut angles on each side of the four small tabs on each corner. Add Tear & Tape to each tab.



Step 3: Fold the sides up and glue the tabs to the inside to form the box as shown.



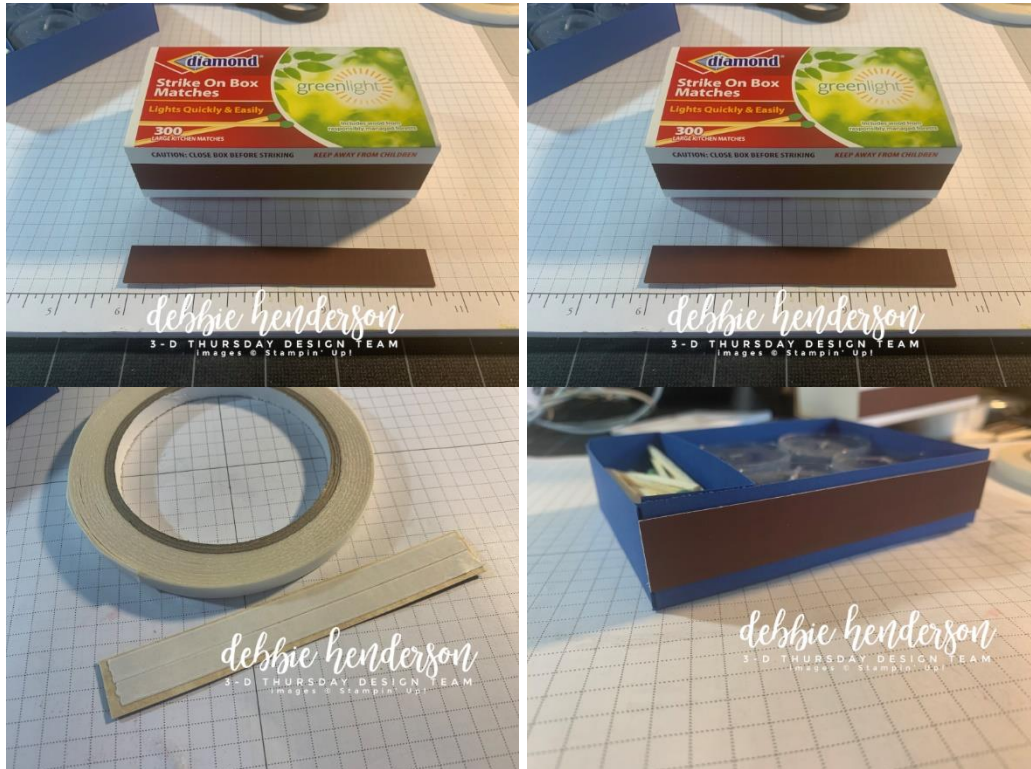
Step 4: Cut a piece of Blueberry Bushel Cardstock to measure 5-1/4" x 1". Score at 1" on each end and add Tear & Tape to each end.



Step 5: Remove backing from Tear & Tape and glue the cardstock strip to the inside of the box, making sure the candles will fit on one end.



Step 6: Add Wooden Matches as needed to the other end of the box to make sure everything fits inside the box.



Step 7: Cut out the striker strip from the match box to measure 4-1/4" long and glue to one long side of the box using Tear & Tape. This is used to light the matches.



Step 8: Lid: Cut a piece of Blueberry Bushel Cardstock to measure 8-1/8" x 4-3/4". Score at 3-1/2" on each end. Use the Detailed Trio Punch to round all four corners. Fold on score lines.



Step 9: Empty the box and add Tear & Tape to the bottom. Remove backing from Tear & Tape and glue the box to one side of the lid, near the score line. Make sure the striker strip is showing on the front of the box.



Step 10: Cut one piece of the Painted Seasons Designer Paper to measure 4-1/2" x 3-1/4" and one piece to measure 4-1/2" x 3/4". Round two corners on one long side of the largest piece of designer paper with the Detailed Trio Punch. Glue the large piece to the top of the lid and glue the smaller piece to the backside.



Step 11: Cut the Granny Apple Green Ribbon to measure 22". Add a piece of Tear & Tape to the bottom of the box about 1-1/2" from the left-hand side. Press the ribbon in place centered. Wrap around the box and tie into a bow.

Decorate the box using the following:

- (1) Sentiment stamped with Blueberry Bushel Ink on Whisper White Cardstock and cut with the Story Label Punch. Glue to the bottom right-hand corner using Stampin' Dimensionals.
- (2) Blueberry Bushel Cardstock cut with the Sprig Punch
- (2) Call Me Clover Cardstock cut with the leaf die from the Four Seasons Framelits Dies
- (5) Stamped leaf images using Lemon Lime Twist Ink on Whisper White Cardstock. Cut with the dies.

Tuck and glue all of the pieces under the bow as you like or you can follow mine:

