



MOTHER'S DAY GIFT BOX



By Sarah Wills

SarahsInkSpot.com

All images copyright © 1990-2024 Stampin' Up! ®

Stampin' Up! Supplies Used:

Cardstocks: Basic White (166780), Misty Moonlight (153081)

Designer Series Paper: Everyday Essentials Mix & Match (167702), Artisan Sketched Garden (167752), Velveteen Assortment Specialty (167915), Sunset Shimmer Vellum (167784)

Dies: Scalloped Blooms (167646)

Stamp: Scalloped Blooms (167639)

Ink: Misty Moonlight (153118)

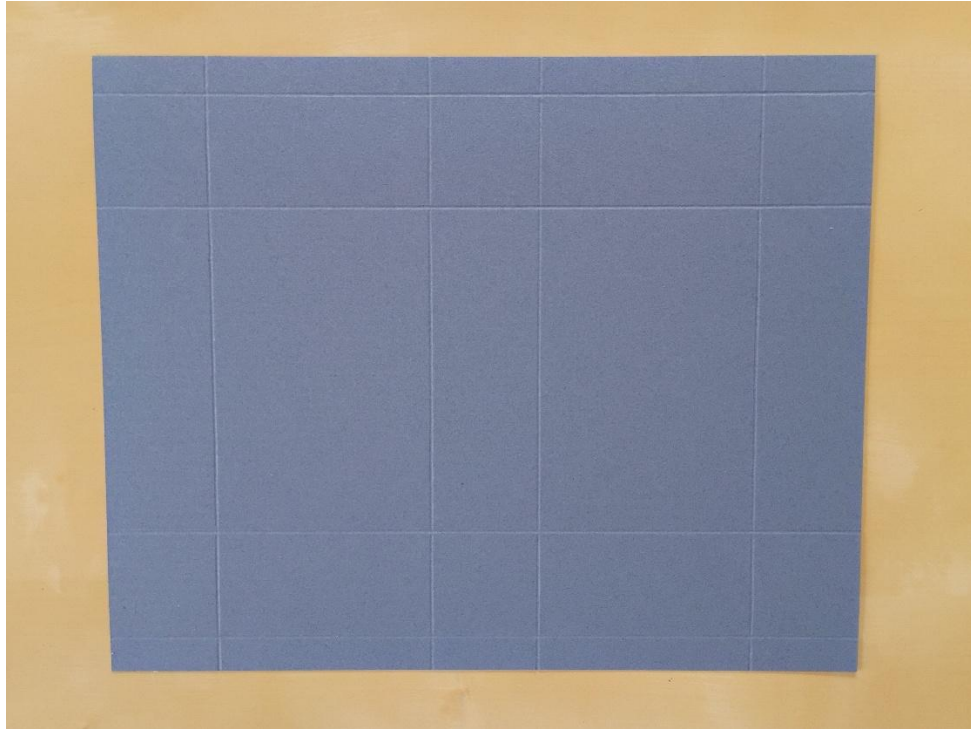
Stampin' Blends Markers: Lost Lagoon (161680), Bubble Bath (161675), Pool Party (154894)

Embellishments: Greetings for All Ephemera Pack (164682), Bubble Bath Faux Linen Ribbon (167075), Dewdrops Embellishments (167748), White Bakers Twine (155475)

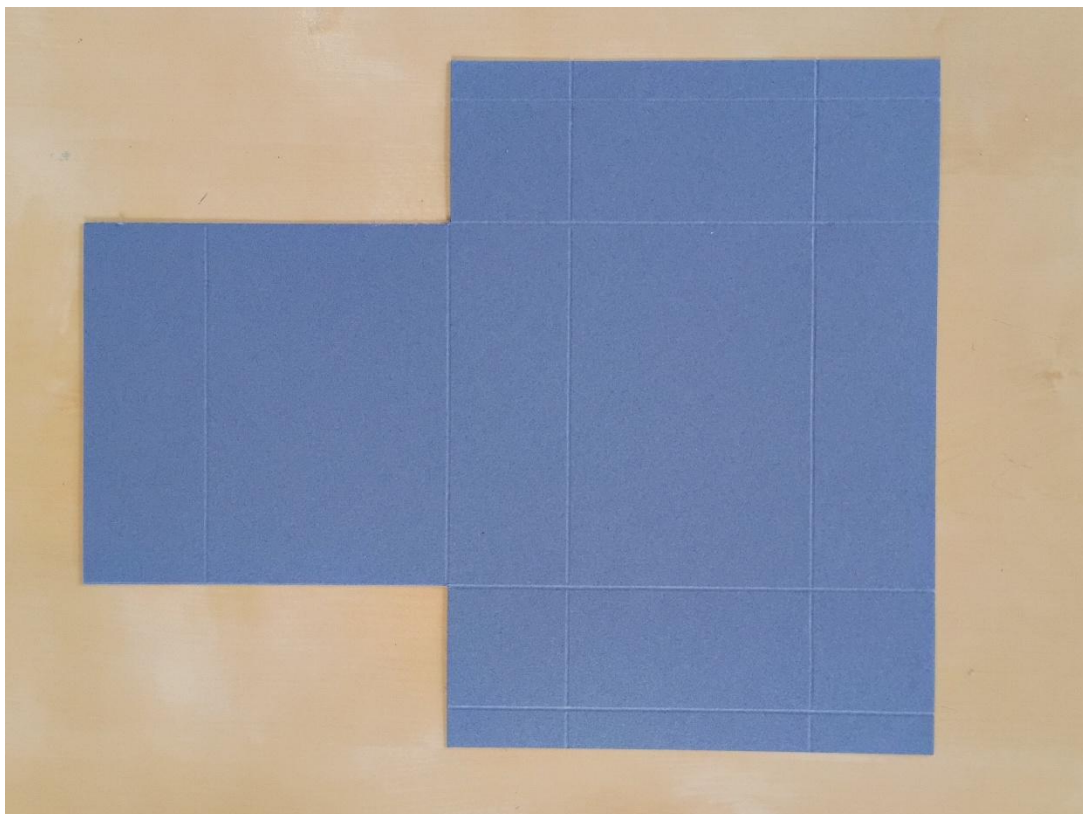
Adhesives: Tear & Tape (154031), Dimensionals (104430), Stampin' Seal (149699)

Misc: Lindt Truffles, Gift Card

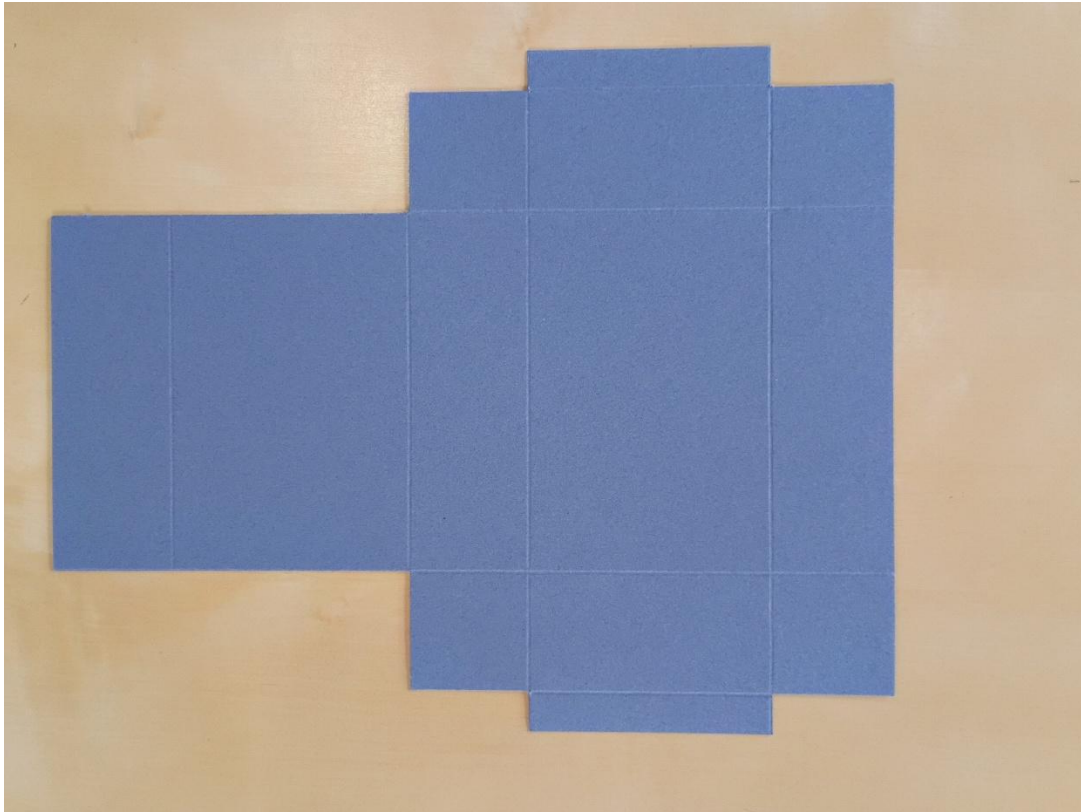
Take a piece of cardstock and put into your score tool with a long edge at the top and score at 1 1/2", 4 1/2", 6" and 9" - turn so that a short edge is at the top and score at 1/2", 2", 6 1/2" and 8"



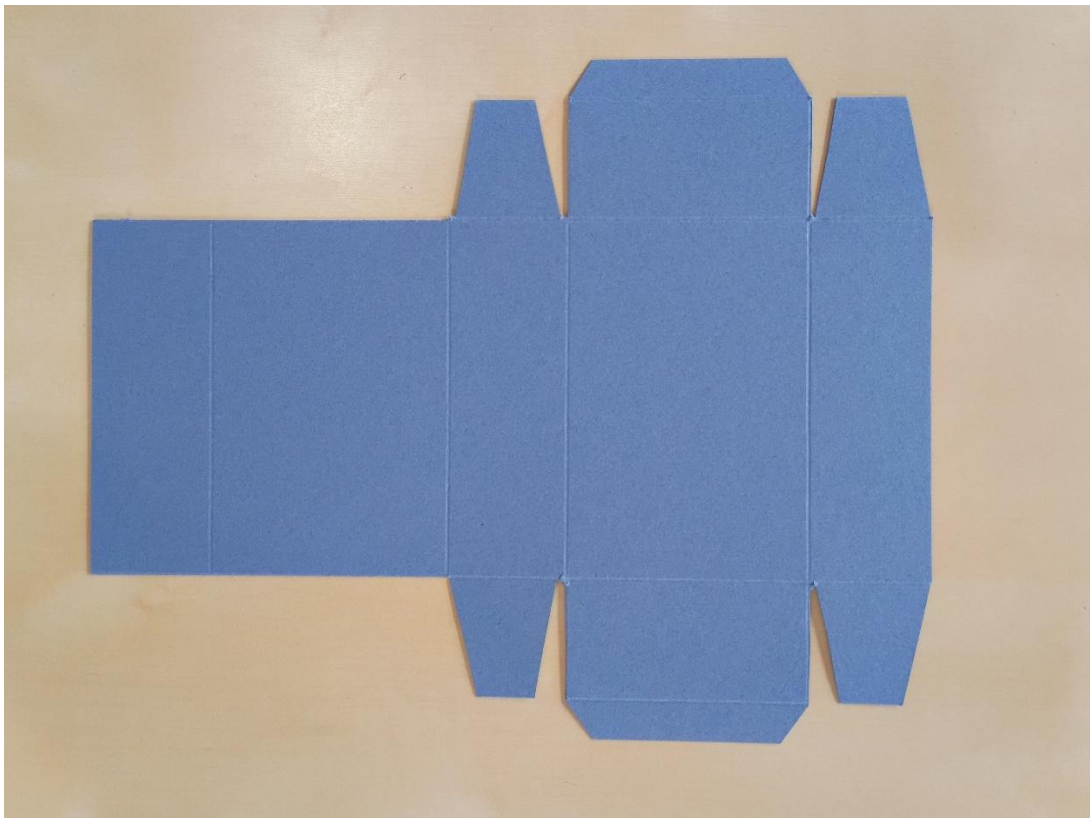
At one end cut down to the second intersecting line down and across from the top- repeat for the bottom edge and you will be left with a central section



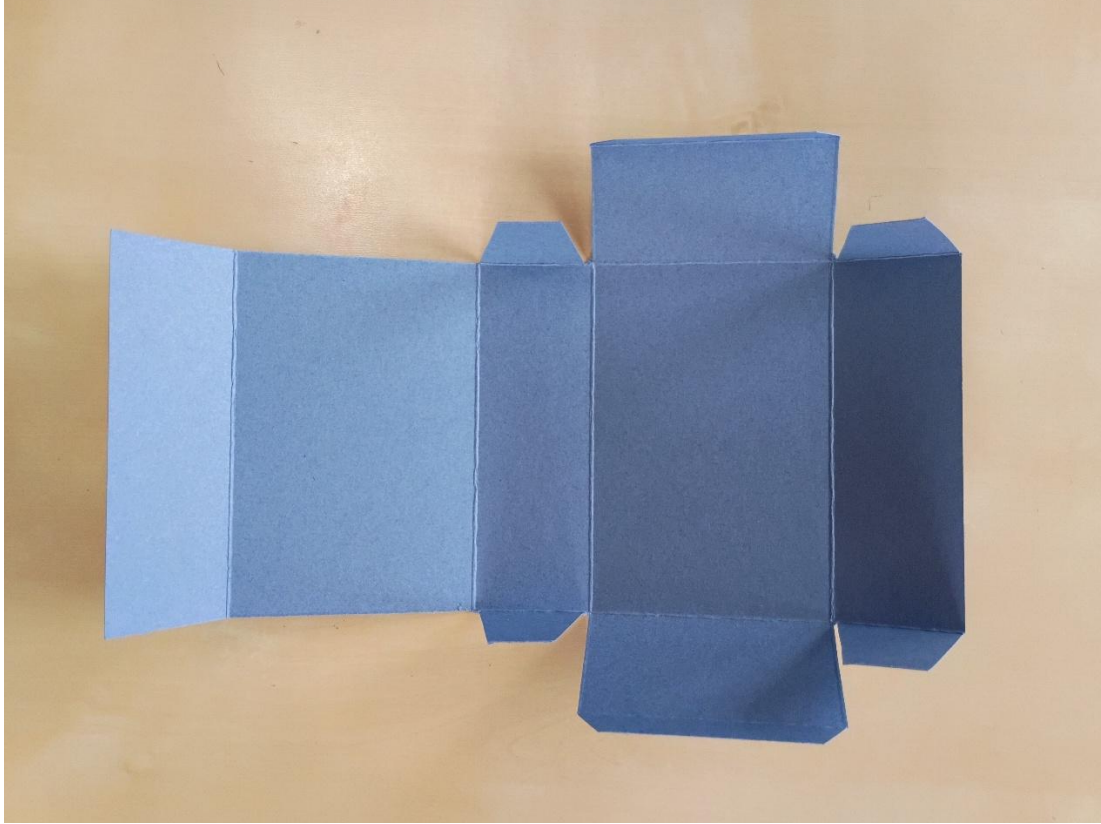
Then cut away the four smaller tab sections down to the first score line both top & bottom, leaving the long one in the middle



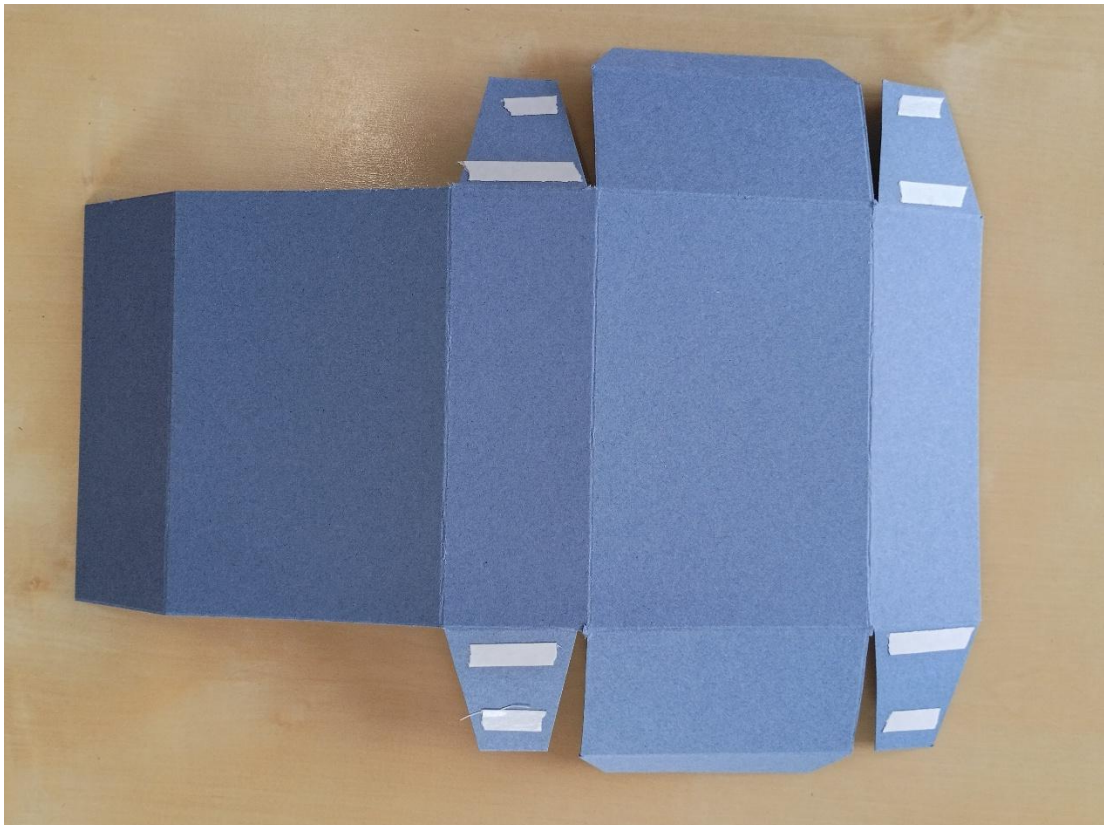
Cut down to create tabs and then cut diagonally to make it easier to fold into a box shape



Fold along all score lines



Turn over and add strong adhesive tape to the small tabs



Remove backing tape and assemble your box



The front large tab should slide inside - if it's too snug you can trim it a little until you get a fit you like

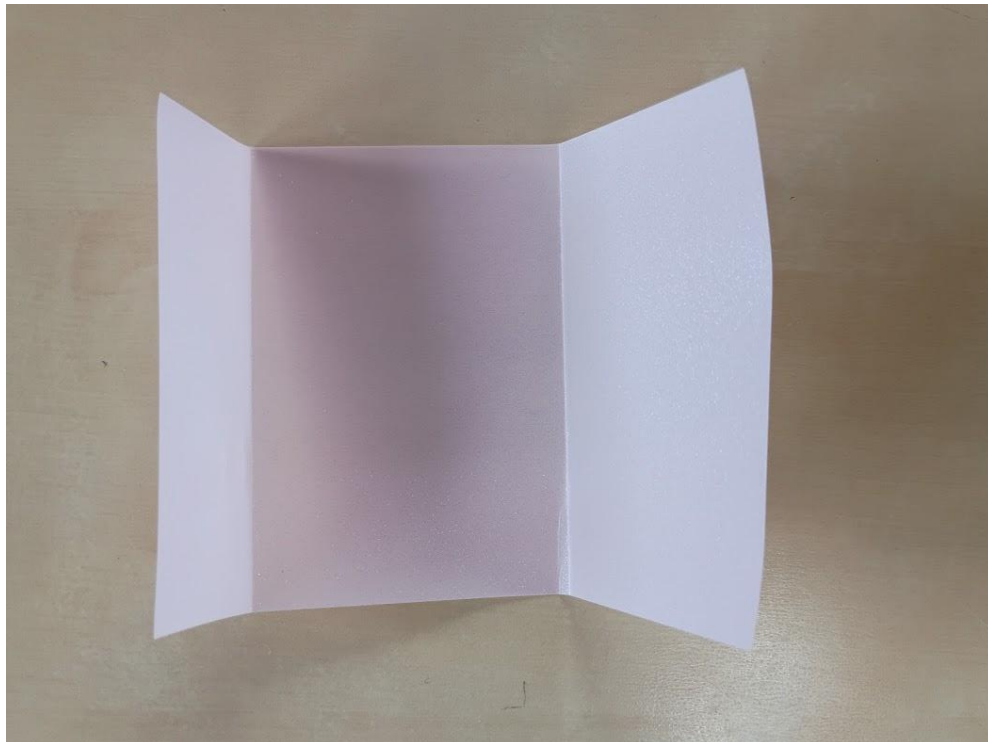


Cut patterned papers to fit the top and sides:

- $4 \frac{3}{8}$ " x $2 \frac{7}{8}$ " for the top of the lid and the inside of the lid
- $4 \frac{3}{8}$ " x $1 \frac{3}{8}$ " for the front & back of the box
- $2 \frac{7}{8}$ " x $1 \frac{3}{8}$ " for the sides of the box



To make the gift card sleeve - cut a piece of Shimmer Vellum to measure 5" x $3 \frac{1}{4}$ " - place in your score tool with a long edge at the top and score at 1" and $3 \frac{1}{4}$ "



Place a strip of adhesive tape at the edge of one of the sides and secure in place - your gift card should simply slide in and out of the sleeve:



This is how I decorated – all items that I used are listed in the supply list at the top of this Project Sheet:





If you have any questions at all about this tutorial please email me at sarah@sarahsinkspot.com and I will be very happy to answer them for you.

sarah